

Dormobile

VOLKSWAGEN

D4/6



Dormobile



D4/6 Caravan including Optional Roof Rack (1613) and Coachline (1984)

Dormobile VOLKSWAGEN D4/6



Take a Volkswagen Type II Panel Van, add the famous Dormobile roof, build in the de luxe Dormobile cupboards, wardrobe, sink unit and water pump, hide away the big cooker, carefully fit the unique cool box, hang the colourful curtains, match the deep cushioned upholstery, make the beds, fold up the bunks, and you've got ...

A VOLKSWAGEN DORMOBILE D4/6 MOTOR CARAVAN

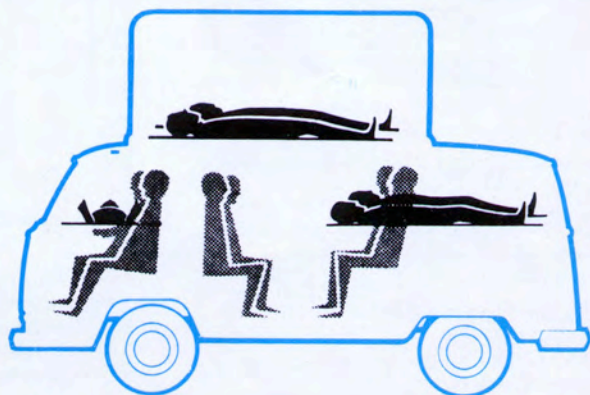
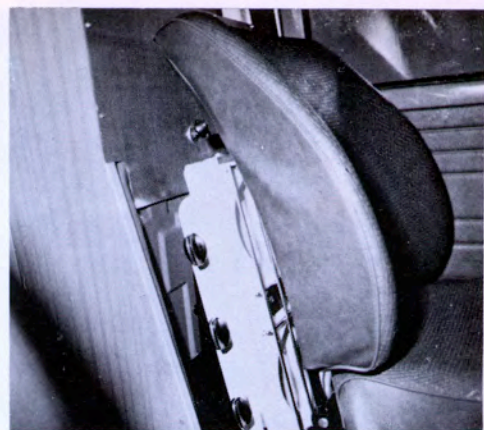
Fitted with famous Dormobile elevating roof, standing headroom is 8' 2". The Galley is equipped with high quality cabinet work finished in wood grained Melamine with a moulded perspex sink and drainer, with water pumped by foot from two 3 gallon tanks below and a cutlery drawer beside. Raise the front passenger seat for the best designed caravan cooker ever! It's a big twin burner with a metal work-top, shelf space and enough room around it to cook a three course meal in comfort.

Gas storage — room for 6 lb. Gaz bottle. The **Wardrobe** gives ample hanging space with easy access. The **Seating** accommodates up to six adults in comfort. The long dining table attaches to the cabinet side by the bench seat and enables the whole family to relax around the table as dinner is served. When not in use, the table stores beneath the rear bench seat. There are big **storage cupboards** for all your requirements found beneath the sink unit, behind the driving seat; a large bedding locker is provided behind the rear seat and accessible from the rear, and a long extra shelf with a lip edge is fitted above the sink unit, ideally placed for smaller items. The **Cool Box** is a big 2 cubic feet and provides a very useful larder with or without ice. **Comfortable sleeping accommodation** is provided by the luxurious double bed of high density foam trimmed in soft tweed fabric, which makes up in the rear by raising the rear bench seat. This could easily accommodate three children and there is still plenty of room to wander about when it is made up. Two 5' 11" roof bunks fold out at roof level with space between and an optional child's bunk 22" x 52" can be fitted above the front driving seat. The famous gale-proof Dormobile raising roof flips up to give 8' 2" standing headroom. The Volkswagen Dormobile is an astonishing piece of design. It's custom built, it's as easy to drive as any other car. No special rates when you cross the Channel. Bags of space but nothing forgotten. Don't forget Dormobile designers have been in the business for years and what they don't know about motor caravans isn't worth knowing. Volkswagen Dormobile — your passport to new frontiers. Bon Voyage!



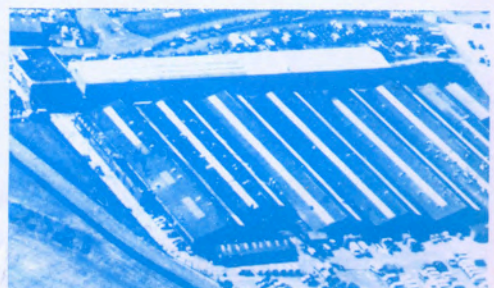


Fridge Optional (1810)



Seats six adults, sleeps four plus child
 Unique foldaway cooker/grill — no intrusion on main living area! Big, insulated coolbox as standard equipment! Bench seat makes double bed with no fiddling, no loose pieces — just two movements!

- All Melamine finish to cabinet-work!
- Fluorescent light as standard equipment!
- Seat belts as standard equipment!
- The unique Dormobile elevating roof!
- Optional roof rack!
- Renowned Dormobile after-sales and spares service second to none!





Caravan Specification

The 4-berth Caravan includes, in the general specification, an elevating roof with two glass windows; two upper bunks, seating for 4/5 facing forward plus 2 rear facing.

Seating for four round table (two removable seats).

Cooker, twin burners and grille; sink cabinet, insulated 'Cool Container', wardrobe, curtains.

'Interior fluorescent lighting, carpeted floor, soft tweed fabric. accommodation for one 6 lb. gas cylinder perspex ventilators in roof.

Also roof-up warning light on dash which flashes when ignition is switched on.

Numerous lockers.

All furniture faced with Melamine in wood grain.

Provision six gallons water — fed to sink by foot pump.

Safety belts to driver and front passenger.

Mirror,

The 2-berth model is similar
Does not have elevating roof nor two upper bunks.

Child's bunk in cab } Optional Extras.
Roof rack, 34" x 38"

Left-hand drive also available.

V.W. Exterior Dimensions

Height, roof up: 9' 11 1/2"; Height, roof down: 6' 9"; Length: 14' 6"; Width 5' 9 1/2"; Height, 2-berth: 6' 4 1/4" (without elevating roof).

V.W. Interior Dimensions

Height, roof up: 8' 2"; Height, roof down: 4' 11"; Width, panel/panel: 4' 11"; Double bed: 6' long, 3' 7" wide; Upper bunks, 5' 11" long, 1' 10" wide. 2-berth model — interior height: 4' 7".

Vehicle Specification

Petrol Engine — air-cooled 4-cylinder: 4-stroke.

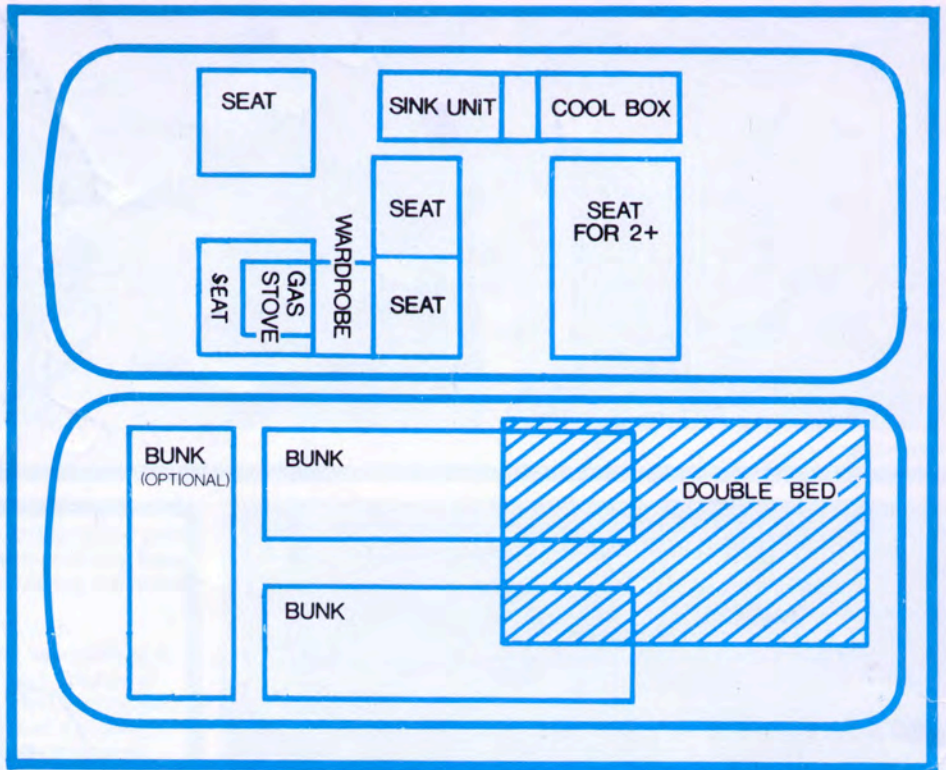
Capacity: 1600 c.c.

Compression Ratio: 7.7: Regular Petrol

Clutch: Single plate, dry clutch.

Transmission: All synchromesh four-speed gearbox. Floor change. All independent suspension.

Turning Circle: Kerb to Kerb: 32.7 ft



Fuel Tank capacity: 13 Imperial gallons (1 gallon reserve). Heating and fresh air ventilation.

Windscreen washer. Safety door locks, spare wheel, 2-speed wiper, etc.

Speed restrictions } As for a private car
Taxation Class }
Insurance }

Tyres: 7.00-14 8 PR Tubeless.

Total kerb weight: 1 ton, 9 cwt., 1 qtr., 4-berth model.

Body Colours

Pastel White, Neptune Blue, Taiga Green, Marino Yellow, (Light Grey & Brilliant Orange to special order)

Trim

See price list.

Warranty

For Van specifications refer to Volkswagen Motors own publications.

The policy of DORMOBILE is one of continuous development and they reserve the right to change specifications and prices without notice.

