

WHEEL ARCH TRIMS

T4 AND T5

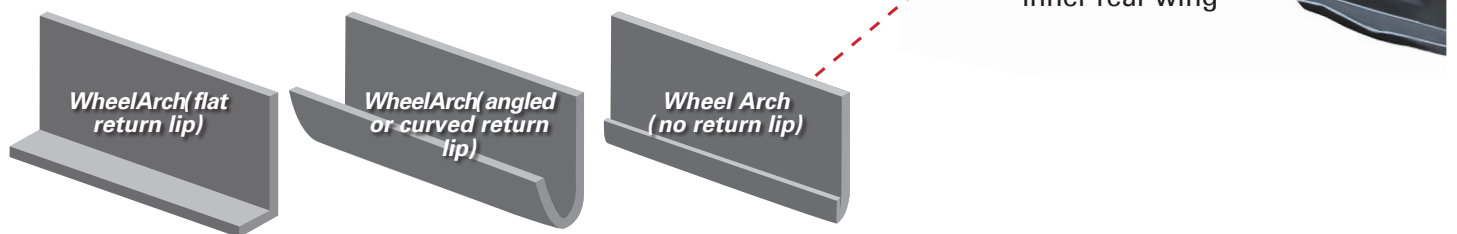
JK Part Numbers J12150, J18358, J18359 &

FITTING GUIDE

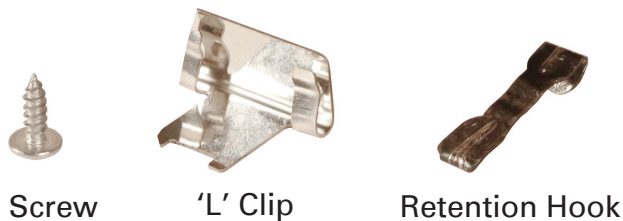
NOTE: Before installing your trims, the vehicles wheel arches should be thoroughly cleaned and dried. This will enable the wheel trim adhesive to stick.

As well as self adhesive strips, the trims come with a selection of fittings to allow them to be fitted to a wide variety of wheel arch return lip profiles.

Below are three diagrams showing the most popular return lip profiles.



Depending on which trim kit you have ordered, you will have either Screws, 'L' Clips, Retention Hooks or a combination of them all.



N.B. Whilst every attempt is made to ensure that these instructions are as accurate and clear as possible, we cannot be held responsible for misinterpretation of these instructions or for any subsequent accident or damage caused through mis-fitted parts.

WHEEL ARCH TRIMS

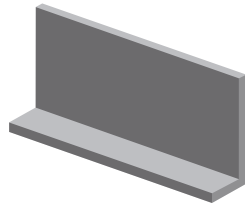
T4 AND T5

JK Part Numbers J12150, J18358, J18359 & J18360

FITTING OPTION 1

For wheel arches with a flat return lip.

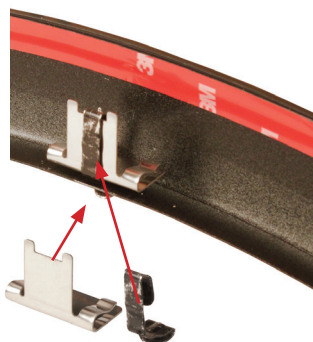
If your wheel arch has a flat lip as shown, you have two choices of securing the trims.



The simplest method is to drill a pilot hole in your wheel arch lip and then screw the trim in place.



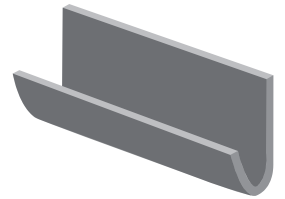
Alternatively you can place an 'L' Clip onto the vehicles wheel arch, place a retention hook through the hole in the trim and then using a pair of long nose pliers bend the retention hook around the 'L' Clip as shown below.



FITTING OPTION 2

For wheel arches with an angled or curved return lip

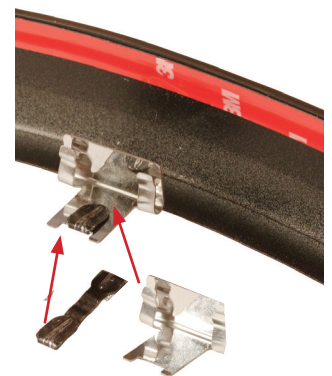
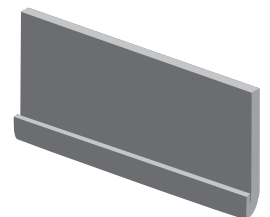
If your return lip is angled or curved making it impossible to screw the trims in place, simply place a retention hook through the trim and using a pair of long nose pliers, hook the other end of the retention hook over the wheel arch return lip.



FITTING OPTION 3

For wheel arches with no return lip

If your vehicle has no return lip you will need to push an 'L' Clip onto the wheel arch and then place a retention hook through the trim and using a pair of long nose pliers, hook the other end of the retention hook over the 'L' Clip.



N.B. Whilst every attempt is made to ensure that these instructions are as accurate and clear as possible, we cannot be held responsible for misinterpretation of these instructions or for any subsequent accident or damage caused through mis-fitted parts.